





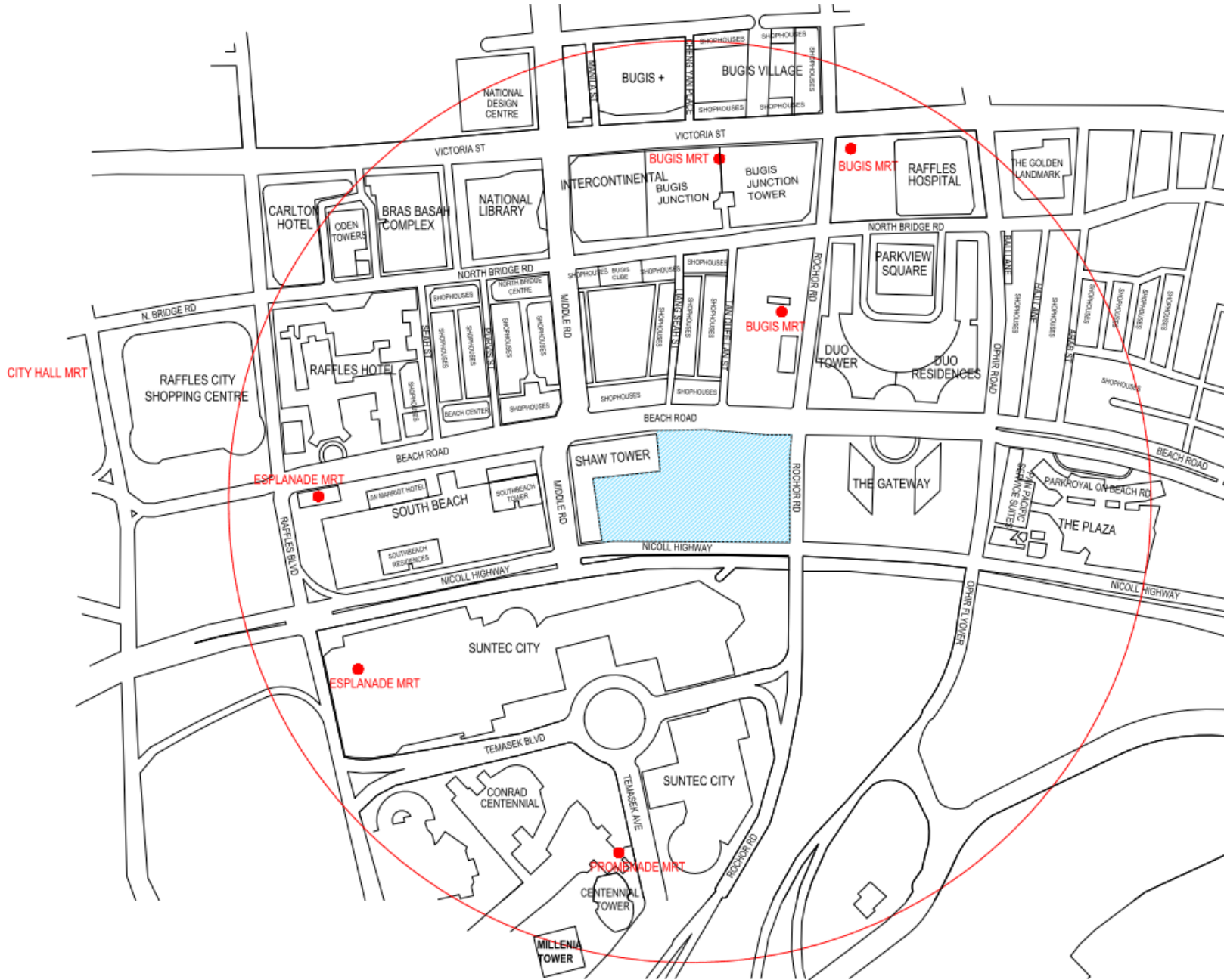
Project Briefing

09 July 2019

Contents

1. Location Plan
2. Rendered Site Plans
3. MSCP circulation
4. Unit Distribution
5. Show Flat Unit Floor Plans
6. Typical Unit Brochure Plan
7. Ceiling Heights
8. Distance, Building Height and Views Study

** All drawings depicted are not to scale



Midtown House
- 3 floors incl. Annex block (1 floor)

Market Place

Residential Tower

Elevated Pedestrian Link

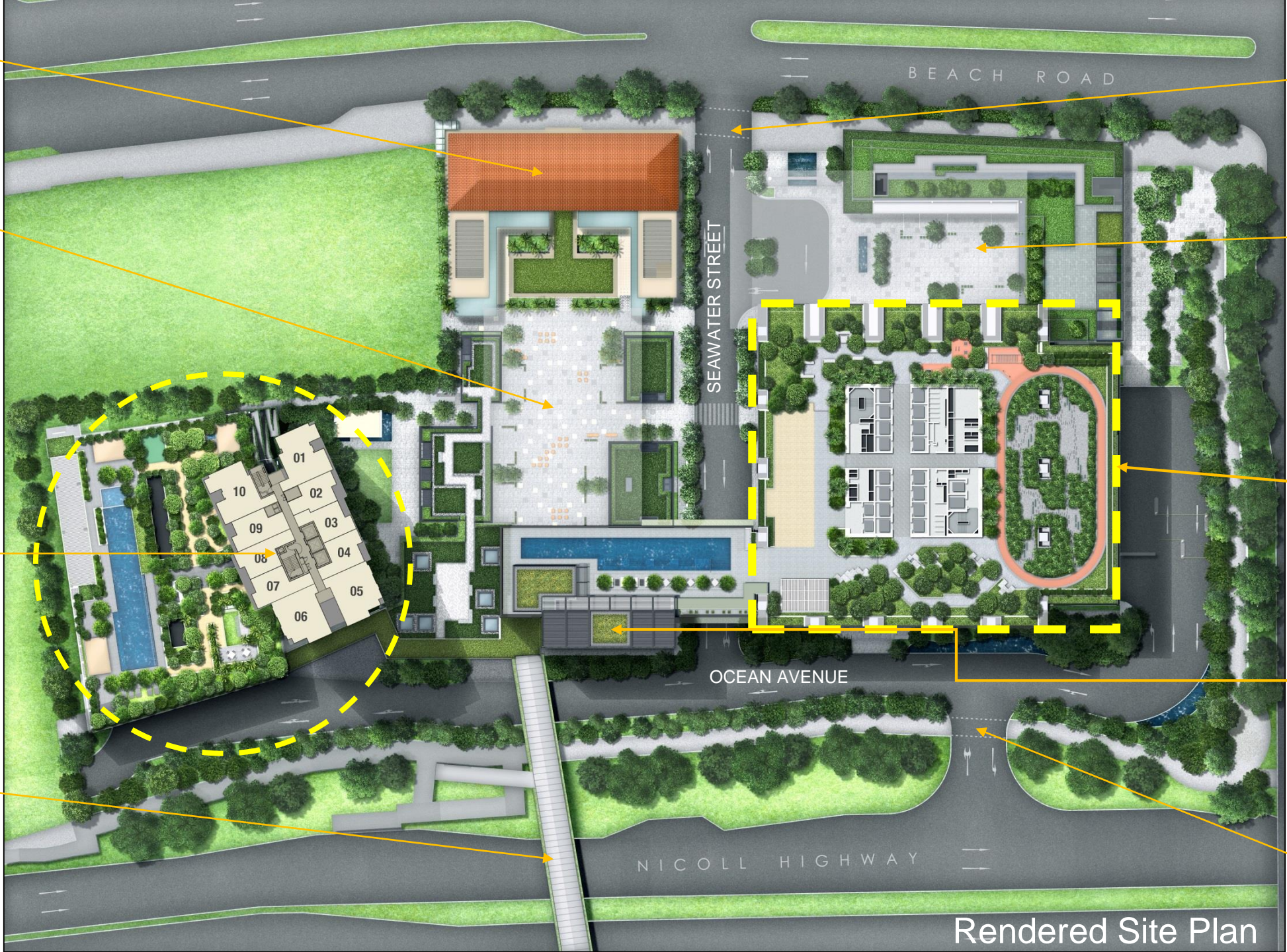
Main entrance/exit from Beach Road

Midtown Square

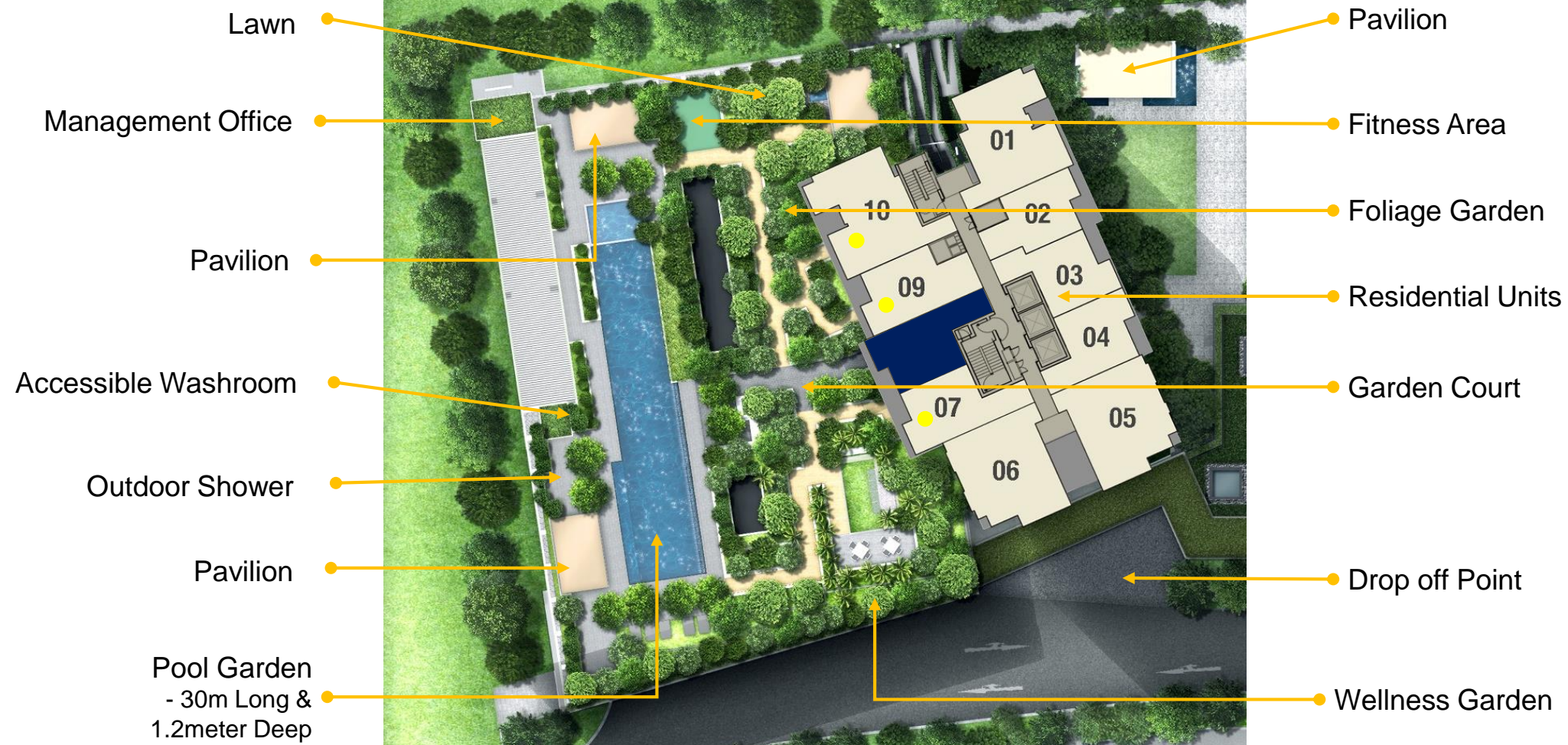
Office Tower

Midtown Hub
- 5 floors + roof

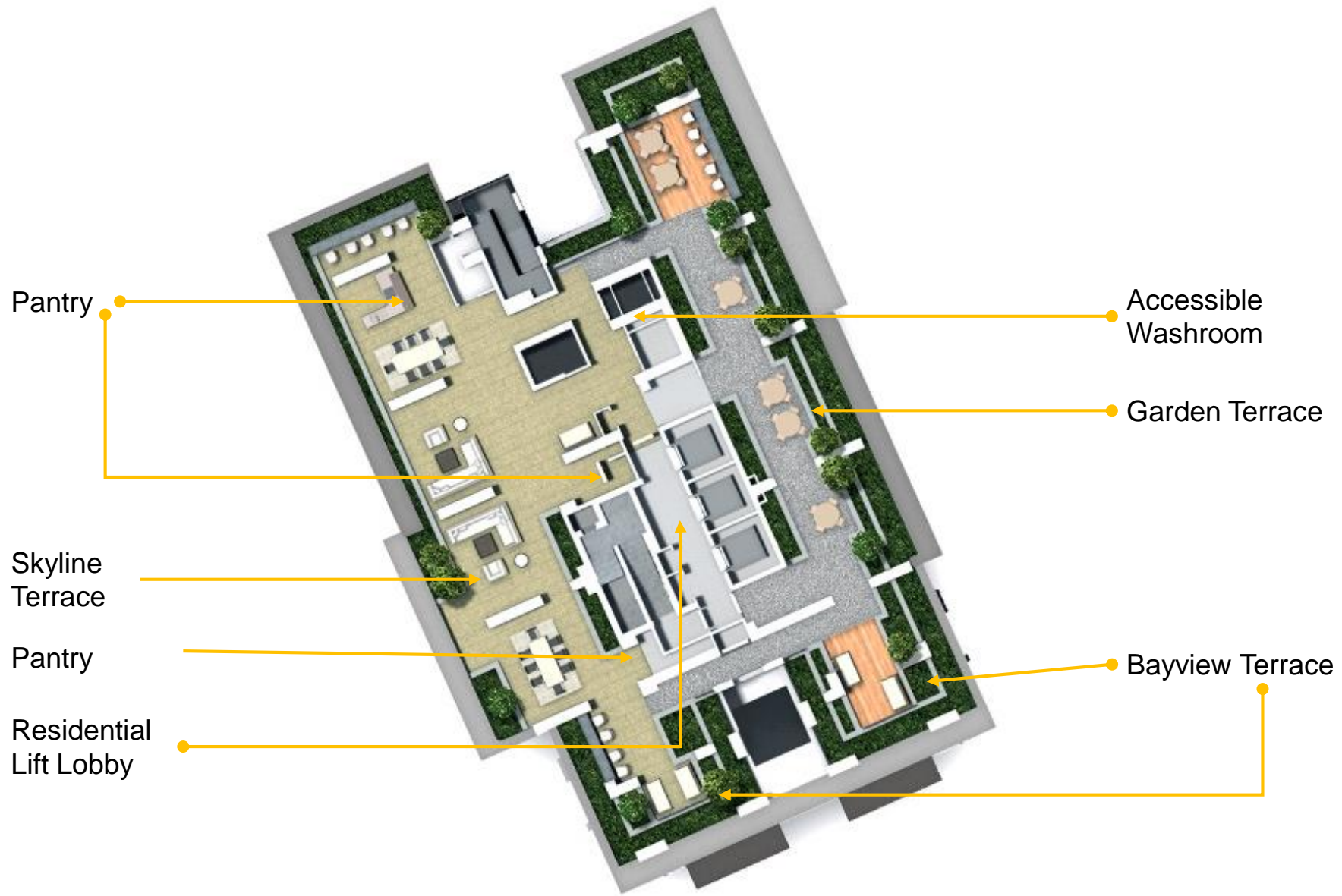
Entrance/exit from Nicoll Highway



Rendered Site Plan



Legend
 ● - Units with PES
 ● - No Unit for L7 Terrace connection



Bicycle Lots

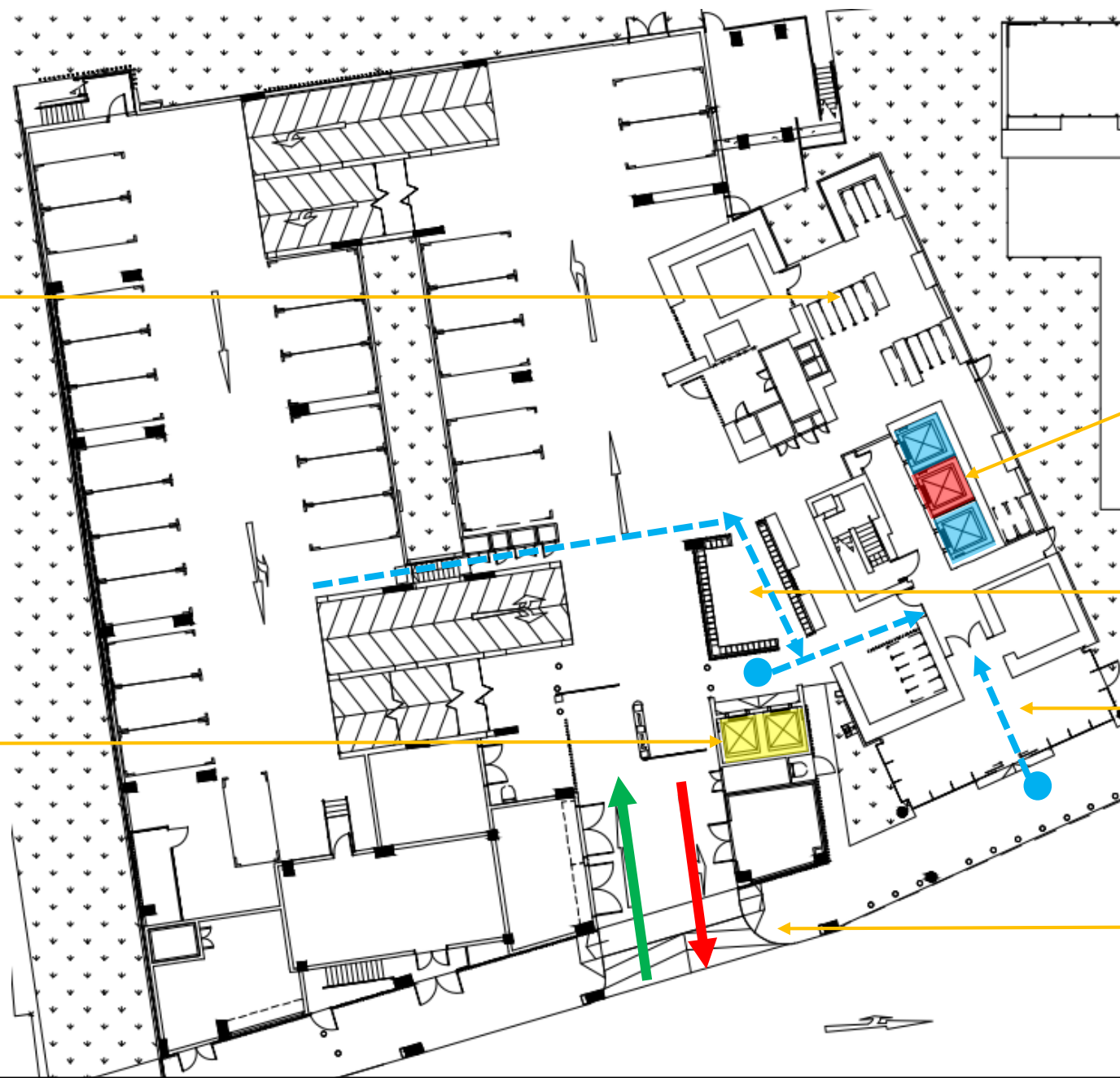
Carpark Lift Lobby

Residential Tower - Fire & Passenger Lifts
(Access for L1, L7 to L32)

Mail room/ letter box Area

Residential Lobby

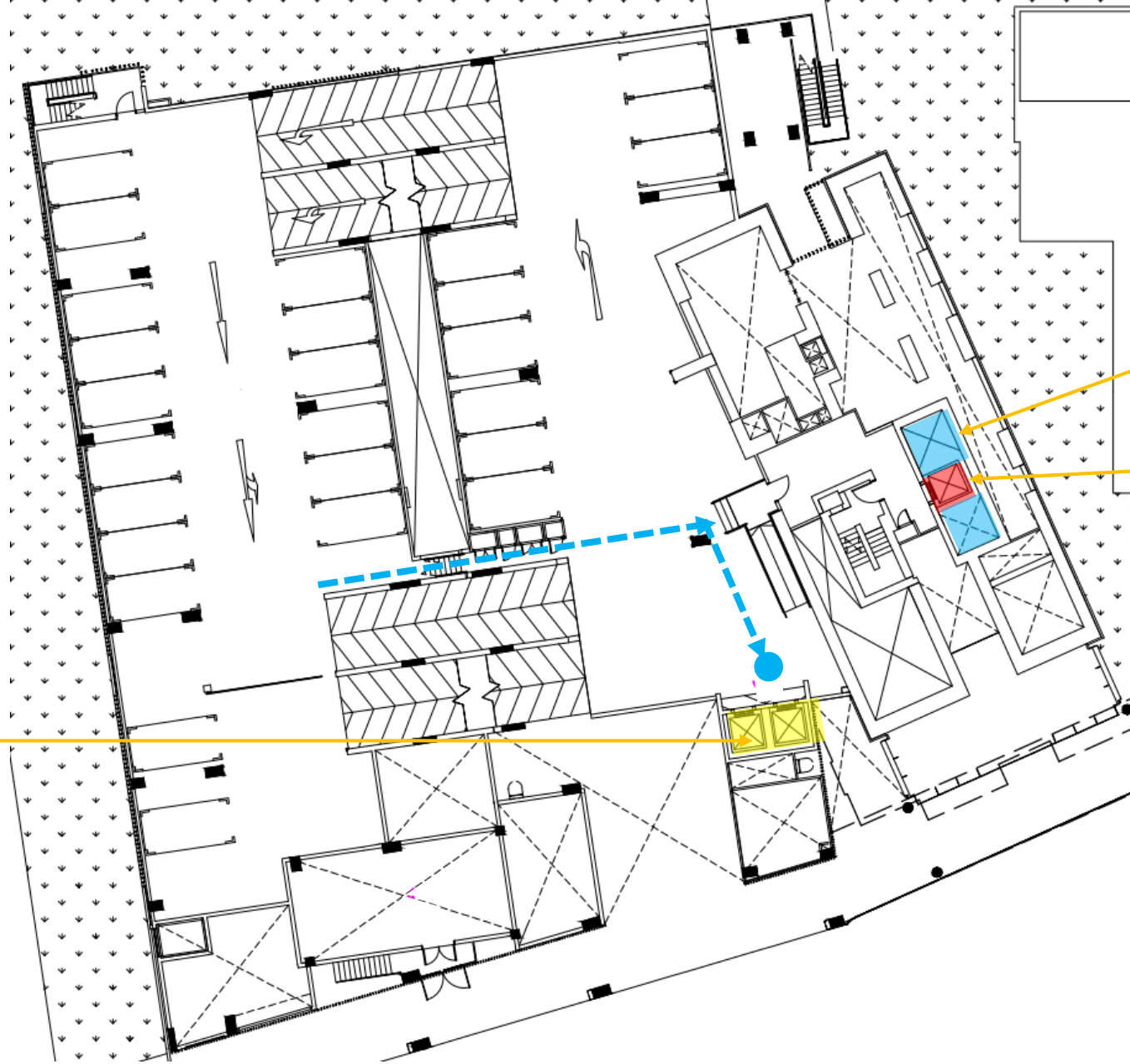
Main Ingress/Egress to Carpark



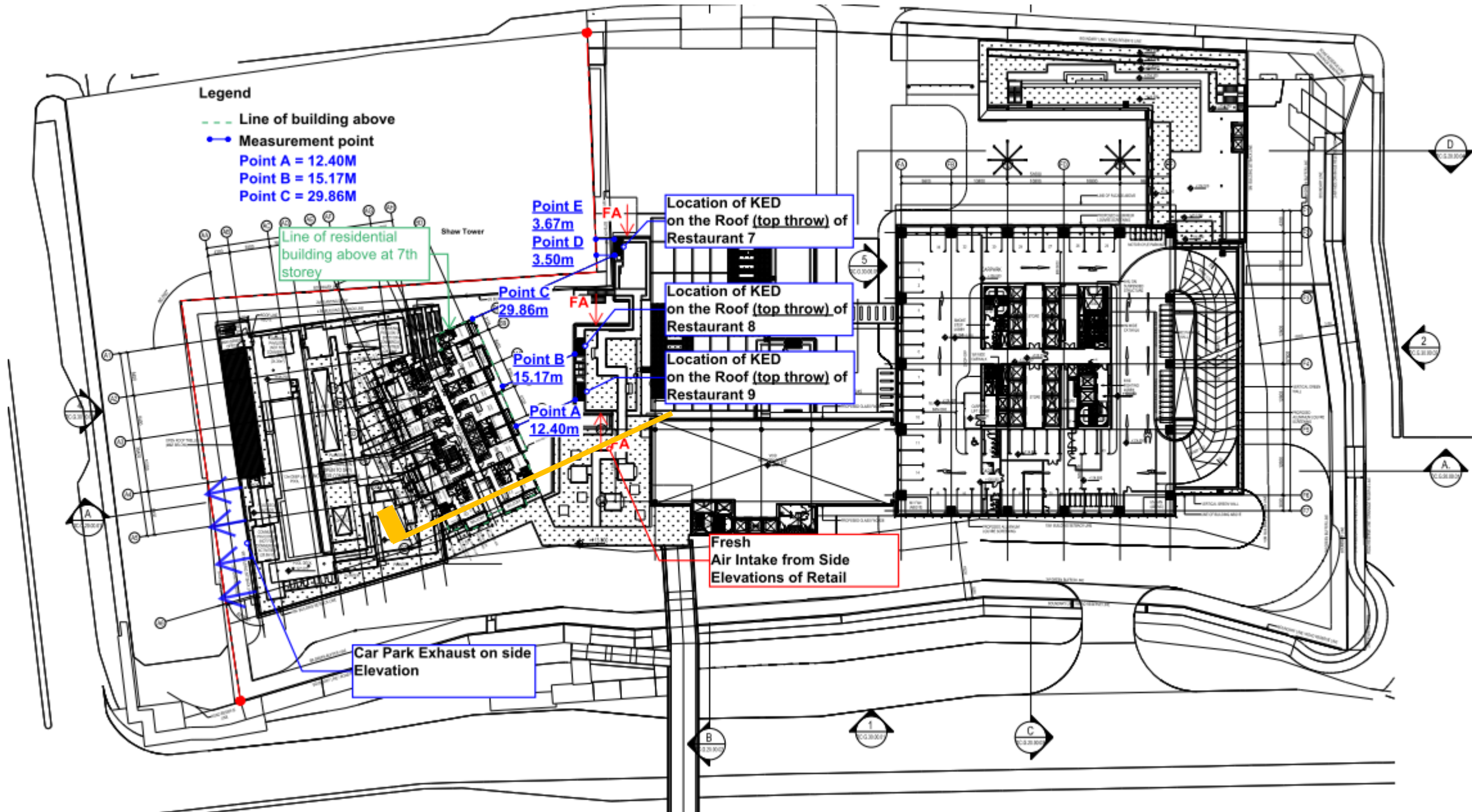
Carpark Lifts
(L1 - L6 only)

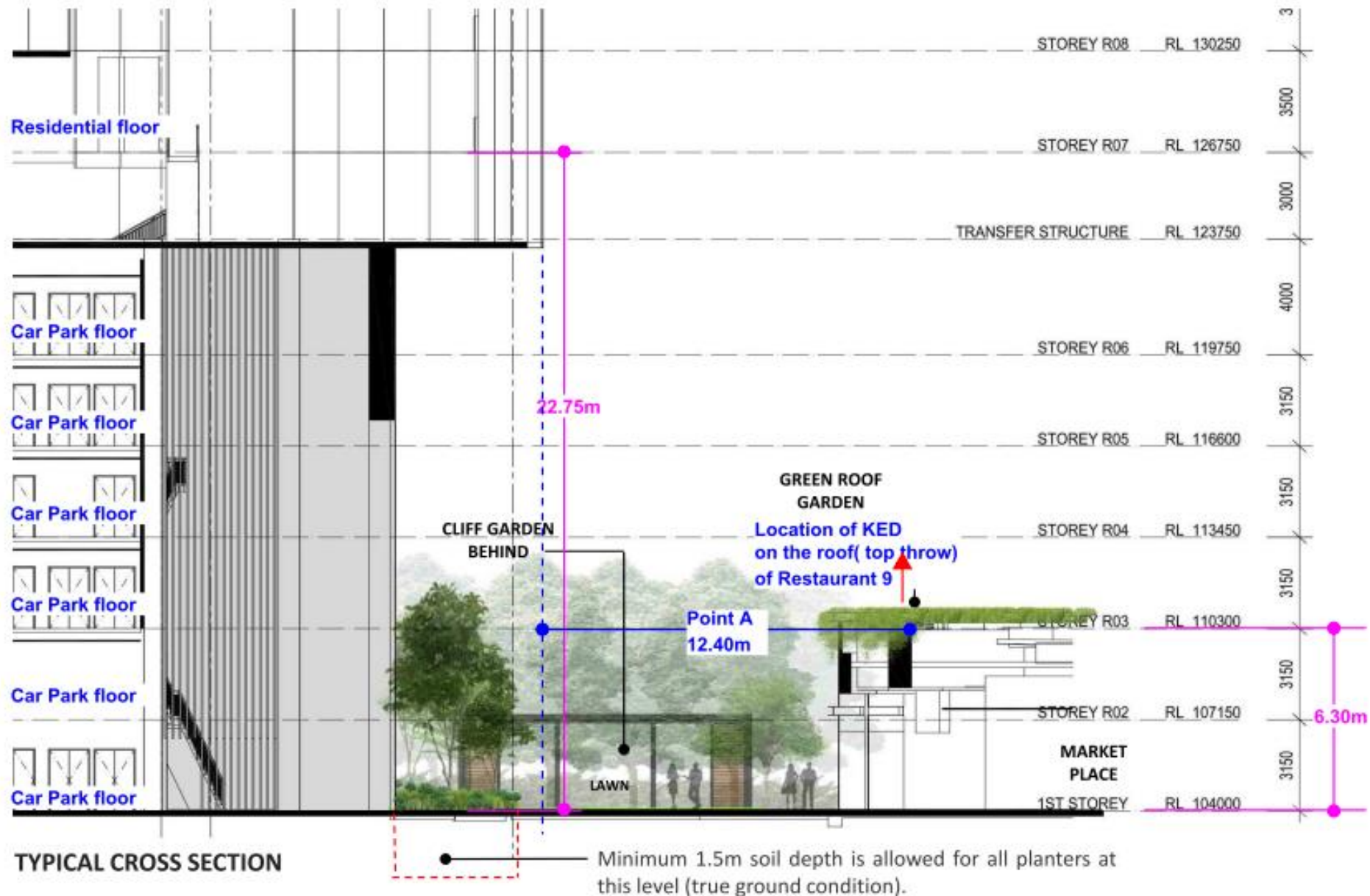
Residential Lifts
(no landing L2-L6)

Fire Lift
(Emergency use
for L2 to 6 only)



FAQ: Pls confirm if the F&B exhaust vents are at the garden. And if all the exhaust vents shown on model are the F&B vents.





Number of unit/Stack	Number of unit/Stack									
	1	2	3	4	*	*	7	8	9	10
Floor	B2-DP	B5-DP	B6-DP	B6a-DP	B1a-DP	B1-DP	B7a-DP	B7-DP	B4-DP	B3-DP
32	B2-DP	B5-DP	B6-DP	B6a-DP	B1a-DP	B1-DP	B7a-DP	B7-DP	B4-DP	B3-DP
30	B2-DP	B5-DP	B6-DP	B6a-DP	B1a-DP	B1-DP	B7a-DP	B7-DP	B4-DP	B3-DP
28	B2-DP	B5-DP	B6-DP	B6a-DP	B1a-DP	B1-DP	B7a-DP	B7-DP	B4-DP	B3-DP
26	B2-DP	B5-DP	B6-DP	B6a-DP	B1a-DP	B1-DP	B7a-DP	B7-DP	B4-DP	B3-DP
25	SKY TERRACE					SKY TERRACE				
24	B2	A1a	A3	A3a	B1a	B1	A2a	A2	A1	B3
23	B2	A1a	A3	A3a	B1a	B1	A2a	A2	A1	B3
22	B2	A1a	A3	A3a	B1a	B1	A2a	A2	A1	B3
21	B2	A1a	A3	A3a	B1a	B1	A2a	A2	A1	B3
20	B2	A1a	A3	A3a	B1a	B1	A2a	A2	A1	B3
19	B2	A1a	A3	A3a	B1a	B1	A2a	A2	A1	B3
18	B2	A1a	A3	A3a	B1a	B1	A2a	A2	A1	B3
17	B2	A1a	A3	A3a	B1a	B1	A2a	A2	A1	B3
16	B2	A1a	A3	A3a	B1a	B1	A2a	A2	A1	B3
15	B2	A1a	A3	A3a	B1a	B1	A2a	A2	A1	B3
14	B2	A1a	A3	A3a	B1a	B1	A2a	A2	A1	B3
13	B2	A1a	A3	A3a	B1a	B1	A2a	A2	A1	B3
12	B2	A1a	A3	A3a	B1a	B1	A2a	A2	A1	B3
11	B2	A1a	A3	A3a	B1a	B1	A2a	A2	A1	B3
10	B2	A1a	A3	A3a	B1a	B1	A2a	A2	A1	B3
9	B2	A1a	A3	A3a	B1a	B1	A2a	A2	A1	B3
8	B2	A1a	A3	A3a	B1a	B1	A2a	A2	A1	B3
7	B2	A1a	A3	A3a	B1a	B1	A2a-G		A1-G	B3-G
6	POOL GARDEN									
5										
4										
3	Car Park Deck									
2										
1										



- Duplex (3 Bedroom)
 - Duplex (2 Bedroom)
 - 1 Bedroom
 - 2 Bedroom
- * Units with acoustic ceiling at balcony + AC ledge

UNIT TYPE	NO OF UNITS
A3	18
A3a	18
A2	17
A2a	17
A1	17
A1a	18
B1	18
B1a	18
B2	18
B3	17
B3-G	1
A2-a-G	1
A1-G	1

(PES)
(PES)
(PES)

1 Bedroom
2 Bedroom

Total: 179

(from Level 7 to Level 24)

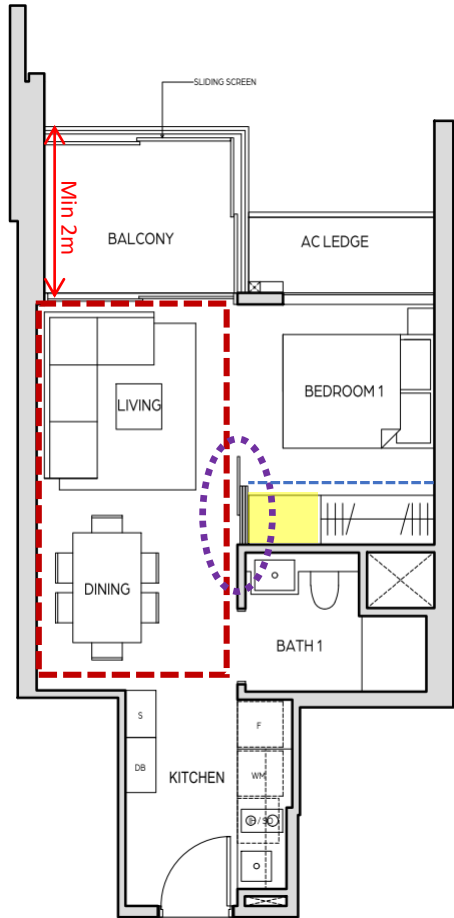
1 BEDROOM

TYPE A1

44 sq m / 474 sq ft

UNIT

08-09 TO # 24-09



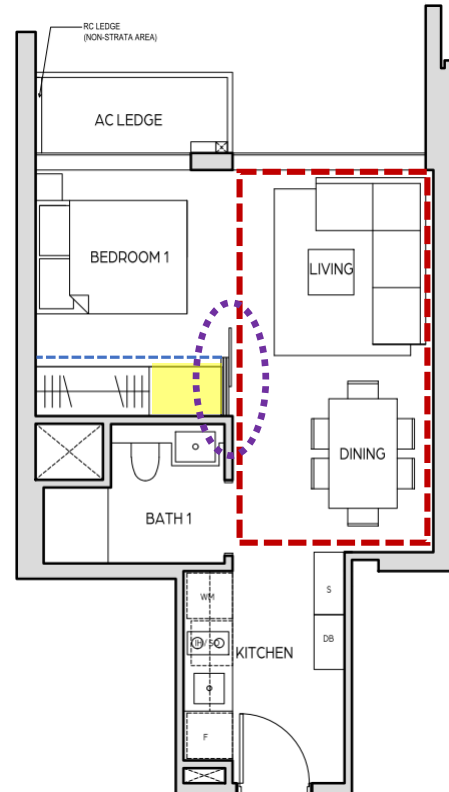
1 BEDROOM

TYPE A1a

38 sq m / 409 sq ft

UNIT

07-02 TO # 24-02



1. Rectilinear Living/ Dining space
2. 6 seater dining + 4-5 seater living
3. Flexibility of Space (Home use, work use, Entertainment)
4. Sliding Glass Door
5. Sizable Balcony
6. Wardrobe (with extra desk or store)
7. Niche in wardrobe for platform



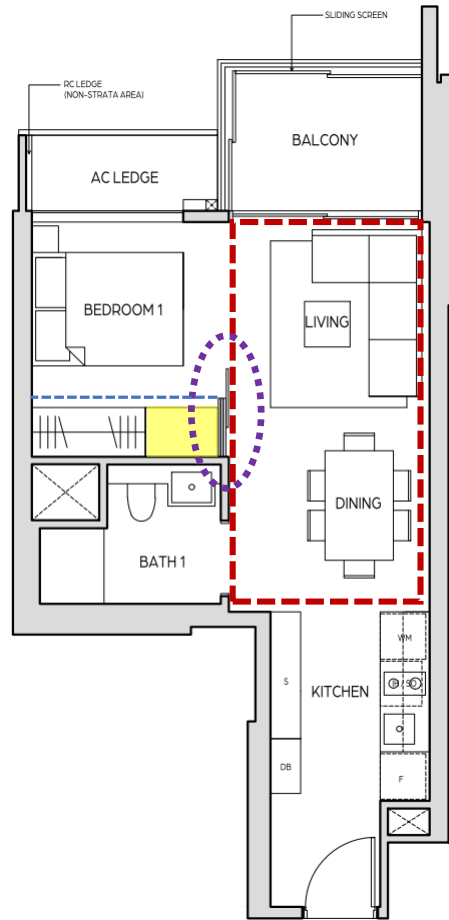
1 BEDROOM

TYPE A2

45 sq m / 484 sq ft

UNIT

08-08 TO # 24-08



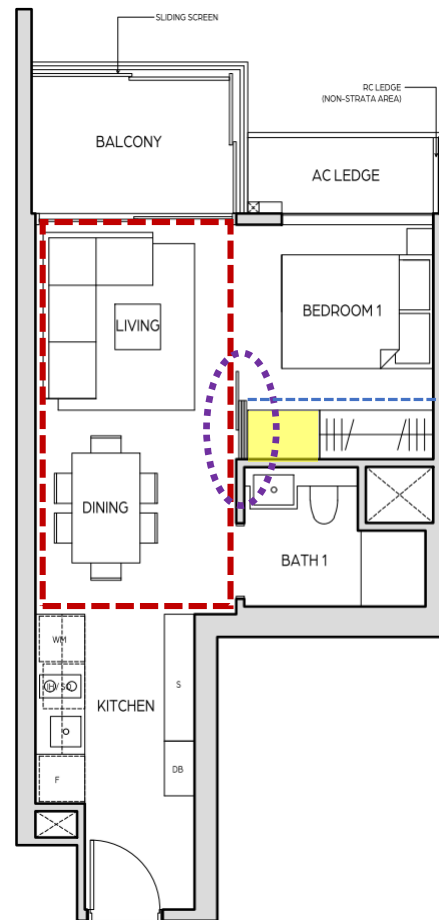
1 BEDROOM

TYPE A2a

45 sq m / 484 sq ft

UNIT

08-07 TO # 24-07



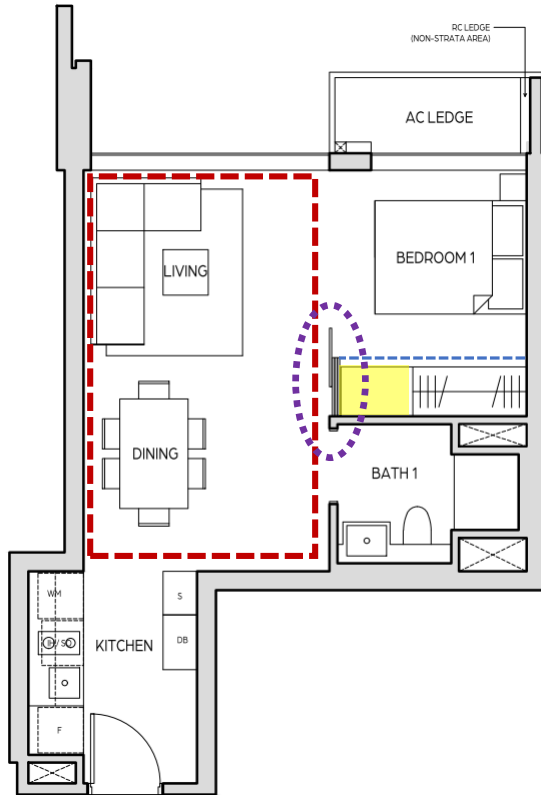
1 BEDROOM

TYPE A3

43 sq m / 463 sq ft

UNIT

07-03 TO # 24-03



1 BEDROOM (Show Unit)

TYPE A3a

42 sq m / 452 sq ft

UNIT

07-04 TO # 24-04



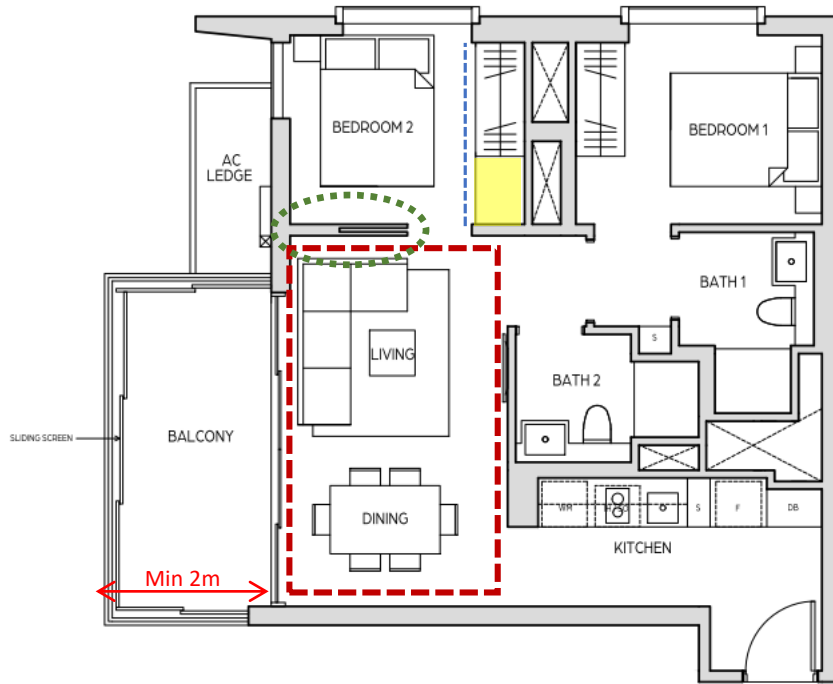
2 BEDROOM

TYPE B1

68 sq m / 732 sq ft

UNIT

07-06 TO # 24-06



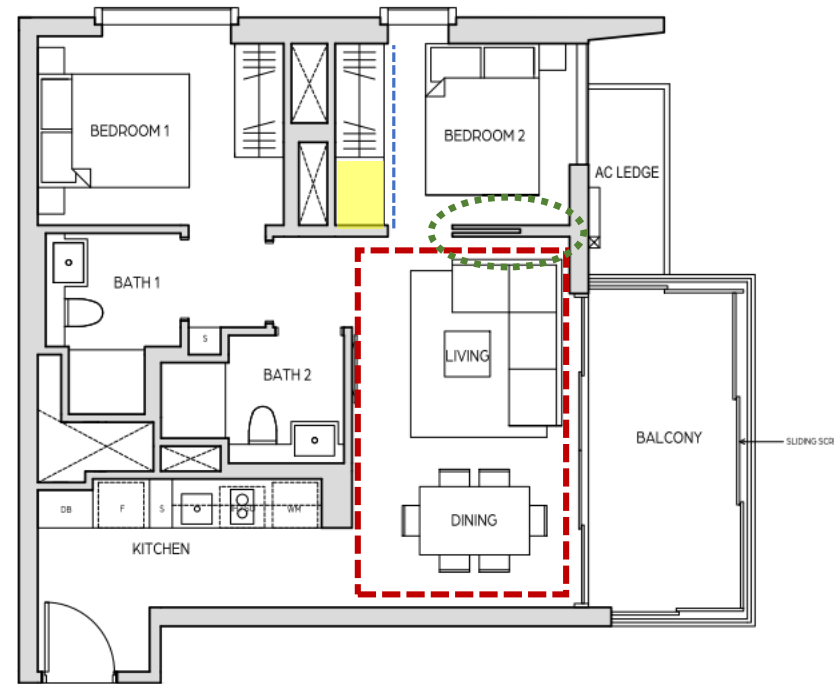
2 BEDROOM (Show Unit)

TYPE B1a

68 sq m / 732 sq ft

UNIT

07-05 TO # 24-05



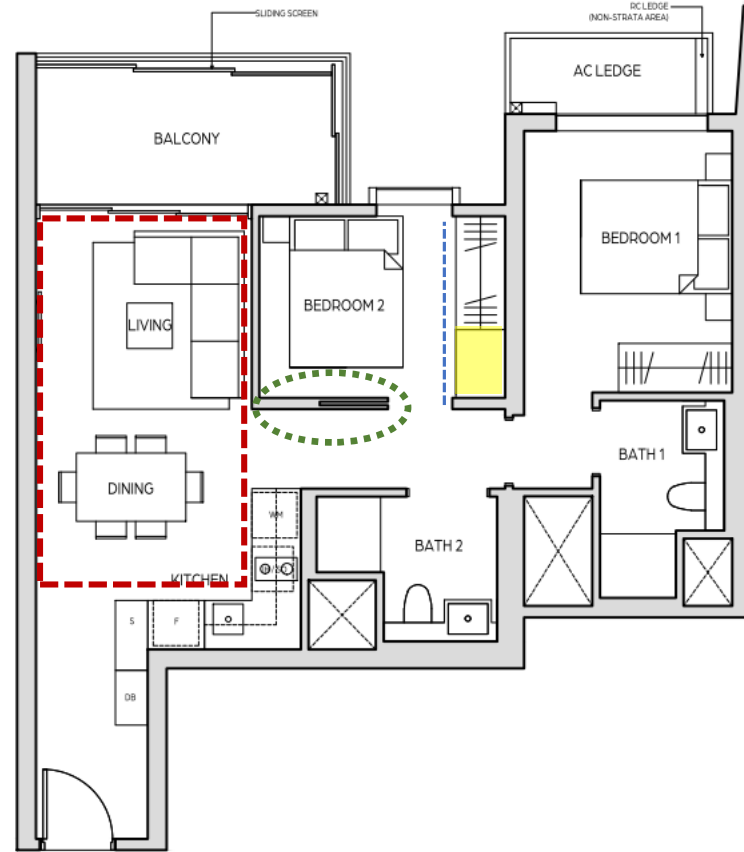
1. Rectilinear Living/ Dining space
2. 6 seater dining + 4-5 seater living
3. Flexibility of Space (Home use, work use, Entertainment)
4. Sliding Pocket Door on removable wall
5. Sizable Balcony
6. Wardrobe (with extra desk or store)
7. Niche in wardrobe for platform



2 BEDROOM
TYPE B2
 69 sq m / 743 sq ft
 UNIT
 # 07-01 TO # 24-01



2 BEDROOM
TYPE B3
 70 sq m / 753 sq ft
 UNIT
 # 08-10 TO # 24-10



Ceiling

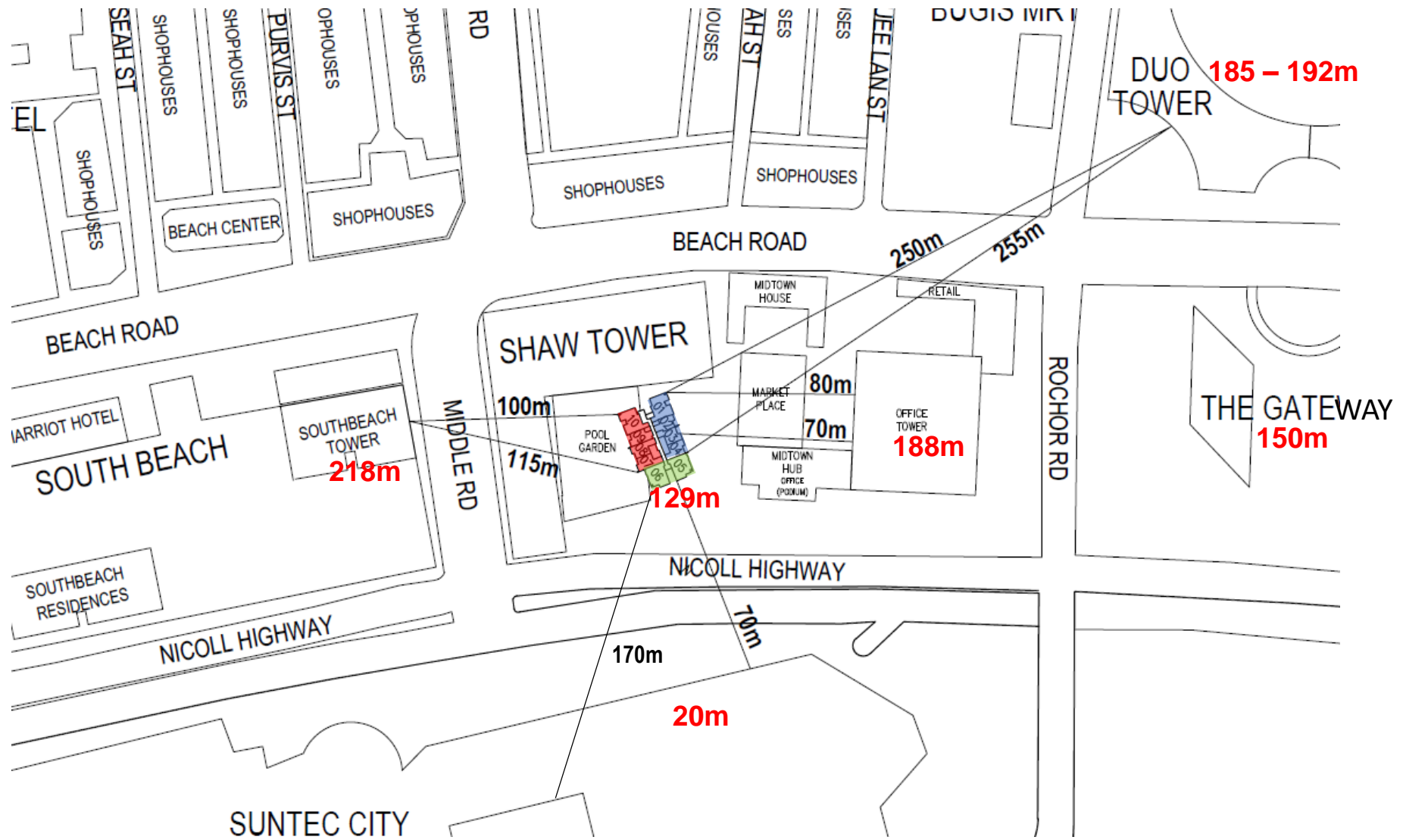
(a) Estimated floor to ceiling height

	7th to 24th Storey Type A3, A3a, A2, A2a, A1 and A1a, A1-G, A2a-G
Living, Dining	3.2m up to soffit of slab and/or ceiling board
Bedroom	3.2m up to soffit of slab and/or ceiling board
Bath	2.4m up to ceiling board
Kitchen	2.75m up to ceiling board
Balcony	3.1m / 3.2m up to soffit of slab and/or ceiling panel

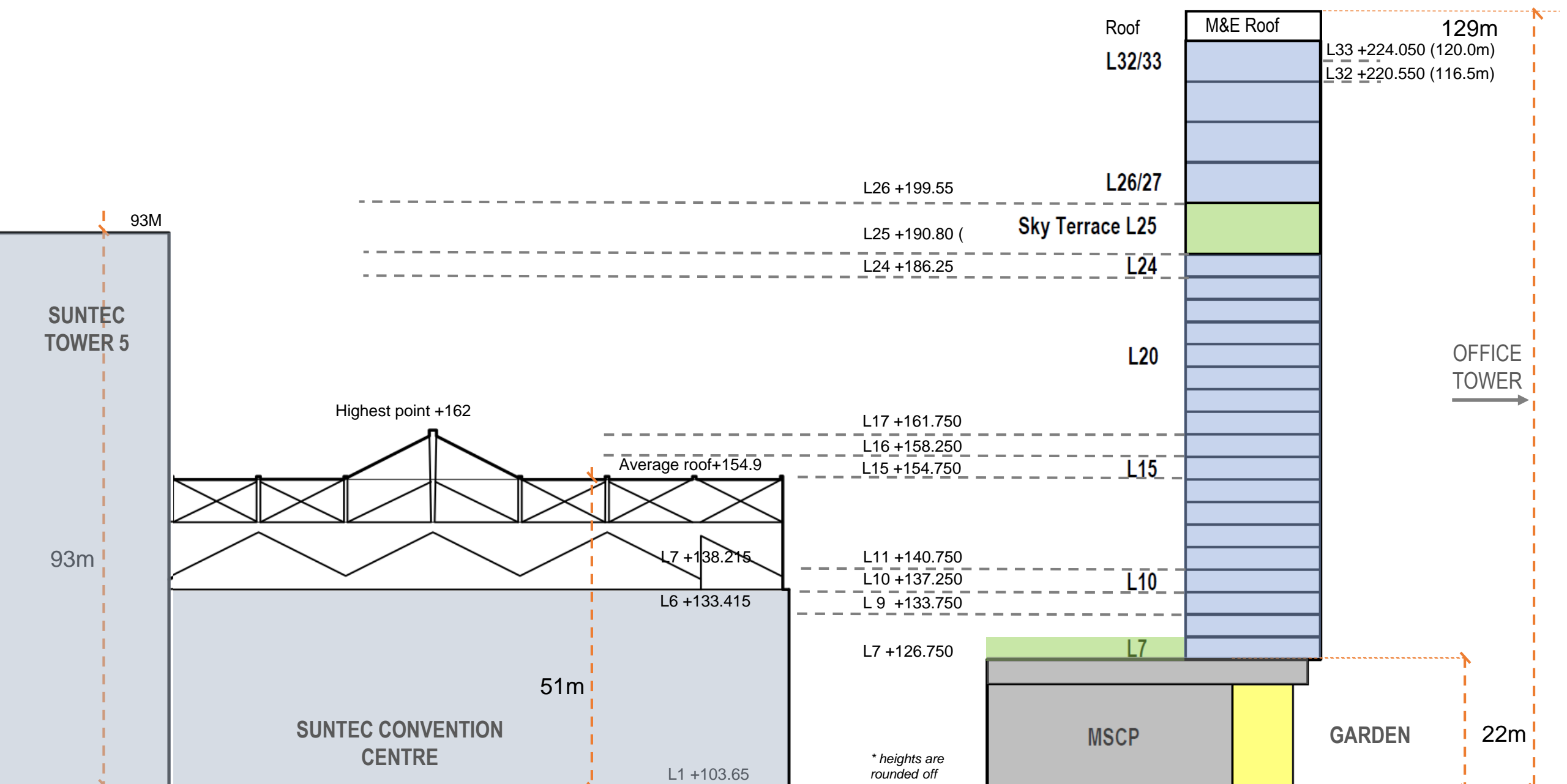
	7th to 24th Storey Type B1, B1a, B2, B3 and B3-G
Living, Dining	3.2m up to soffit of slab and/or ceiling board
Bedrooms	2.65m / 2.7m / 3.2m up to soffit of slab and/or ceiling board
Baths	2.4m up to ceiling board
Kitchen, Corridor to Bedrooms	2.7m / 2.75m up to ceiling board
Balcony	3.1m / 3.2m up to soffit of slab and/or ceiling panel

Note:

- 1. The above ceiling height(s) is from finished floor level to underside of slab/ ceiling board/ceiling panel whichever is lower*
- 2. Ceiling height for localized bulkheads (where applicable) shall be at minimum 2000mm*
- 3. The above ceiling height(s) does not take into account localized bulk head(s) (if any)*



**Building heights indicated in red are approximate and base on available information on website and are rounded off*







A96m (Approx at Level 26)



A120m (Approx at Level 33)



B34m (Approx at Level 10)



B51m (Approx at Level 15)



B69m (Approx at Level 20)



B96m (Approx at Level 26)



B1 20m (Approx at Level 33)



C51m (Approx at Level 15)



C69m (Approx at Level 20)



C96m (Approx at Level 26)



C120m (Approx at Level 33)



Thank You